

Advanced external source in Adlib for Windows

Terms in your Adlib catalogue records are normally validated in the thesaurus, which is an authority database *within* your Adlib application. It's an *internal* source.

As of Adlib for Windows version 7.4, you can also set up one or more sources *outside* your Adlib application to validate a term. This feature is called *Advanced external source*. With it, you can validate terms from a source on the internet. You can also derive (copy) terms and some of their additional fields like broader term and scope note from the external source.

What the user sees

A user may enter a (new) term and verify it with Search linked file as usual. Apart from being able to browse the local thesaurus for the desired term, the user can select and browse the external source. The user can then select a term, as normal. If that term does not exist yet in the local Adlib thesaurus, a new local thesaurus record will be created for it. If the term does already exist locally, the user may choose to update its existing record.

How to implement

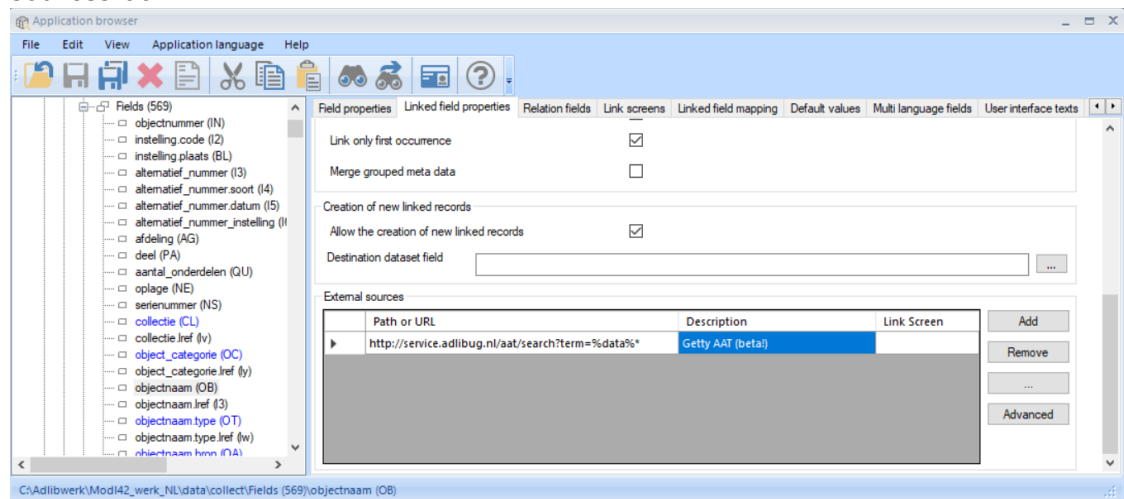
To implement this feature, you have to (1) upgrade to Adlib for Windows version 7.5 (recommended) and (2) adapt your application. How to do the latter is outlined below. You should determine which fields will be copied (or "derived") from the external source. The external source itself must respond with Adlib XML when queried, and its field names (its XML tags) must be identical to English data dictionary field names in your Adlib authority database.

Setting up an external source

You have to set up the external source for each individual Adlib field you want to use it with. So if you want to use the external source for three catalogue fields, you'll have to go through the following steps three times, one for each of those fields.

We'll set up an external source for the field *Object name* in the Museum catalogue (collect). We'll set it up so that *term*, *broader term*, *source*, *scope note* and *history note* are copied into our Adlib thesaurus.

1. Open Adlib Designer 7.5 , open the \data folder, open collect and select the field `object_name`, it has tag OB.
2. Head over to the Linked field properties tab. At the bottom you'll see the External sources box.



3. Click the Add button in that box to insert a new external source.

- Click the Path or URL entry field. Here, you can enter the URL to the external source. In this example we will be using this URL:

`http://service.adlibug.nl/aat/search?term=%data%`

This service is an interface to Getty Vocabularies' Art & Architecture Thesaurus, the Dutch section maintained by the Dutch RKD Institute for Art History. The interface is brought to you by the Dutch Adlib User Group, hence 'adlibug'.

Let's look at the components that make up this URL.

It starts with an internet link...	<code>http://service.adlibug.nl</code>
... that has an aat section..	<code>/aat</code>
... in which we search the field term ...	<code>/search?term</code>
... for the term that we entered in our Object name field. Note that you don't need quotes, nor a *. This service adds them automatically.	<code>=%data%</code>

Aside: It's a good idea to experiment with your URL in an editor, and test it by copy-pasting it into a browser, replacing `%data%` with some term, of course. For example:

`http://service.adlibug.nl/aat/search?term=beker`

- In the Description field, enter the name or a description of the external thesaurus. You must do this for English and for your local language(s).

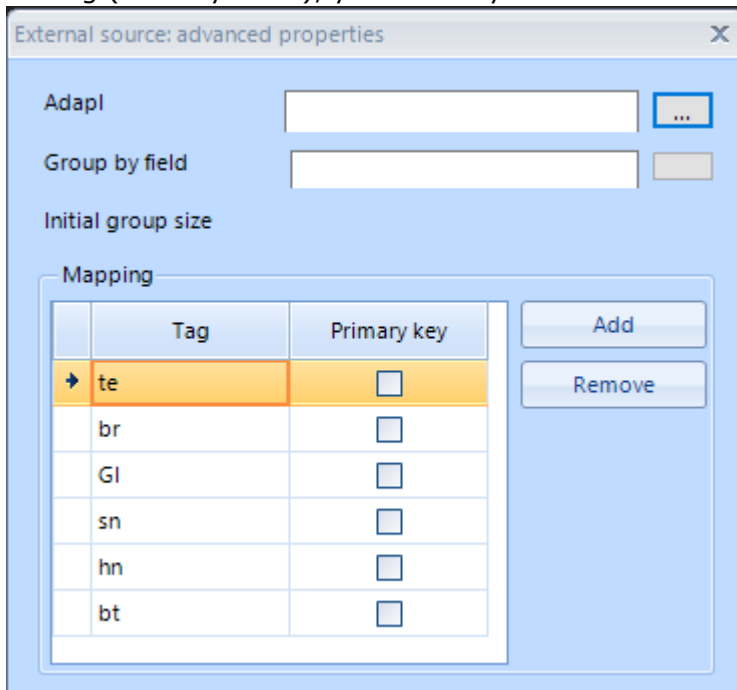
In the field *Link Screen* you could specify a custom link screen. For now, we'll leave this empty, so we'll get the default specified in the *Link screens* tab for this field.

You should end up with something like this. Save changes.

	Path or URL	Description	Link Screen
▶	<code>http://service.adlibug.nl/aat/search?term=%data%*</code>	Getty AAT (beta)	

Buttons: Add, Remove, ..., Advanced

6. Now it's time to select which fields will be copied ('derived'). Click the Advanced button, to open the *External source advanced properties*. At the time of this writing (January 2019), you can only Add and Remove tags.



7. Click Add and select tags for the fields you want to derive. In this example, we selected
- te for term
 - br for source
 - sn for scope note
 - hn for history note
 - bt for broader term
 - GI for Getty_ID.

Plaese note:

- with this set-up, when the user derives a new term from the Getty Vocabularies AAT, the BroaderPreferred of the AAT will also be derived, and a new thesaurusrecord will be created for it. This may or may not be what you want, depending on the nature of your collection. Use common sense.
- GI is a custom field in my application. You won't see it in a Model application. For more information, please refer to the documentation on service.adlibug.nl.

Close this window and save changes.

That's it! Repeat for the other fields you wish to use an external source with. Please refer to the Adlib User Guide for information about how to use the external source when you're actually validating a previously entered term while editing a record.

Credits

This text is adapted from the General Topic [Advanced External Source](#) in the Adlib Designer documentation.

Rolf Blijleven, 29 January 2019

rolf [at] rolfblijleven [dot] nl